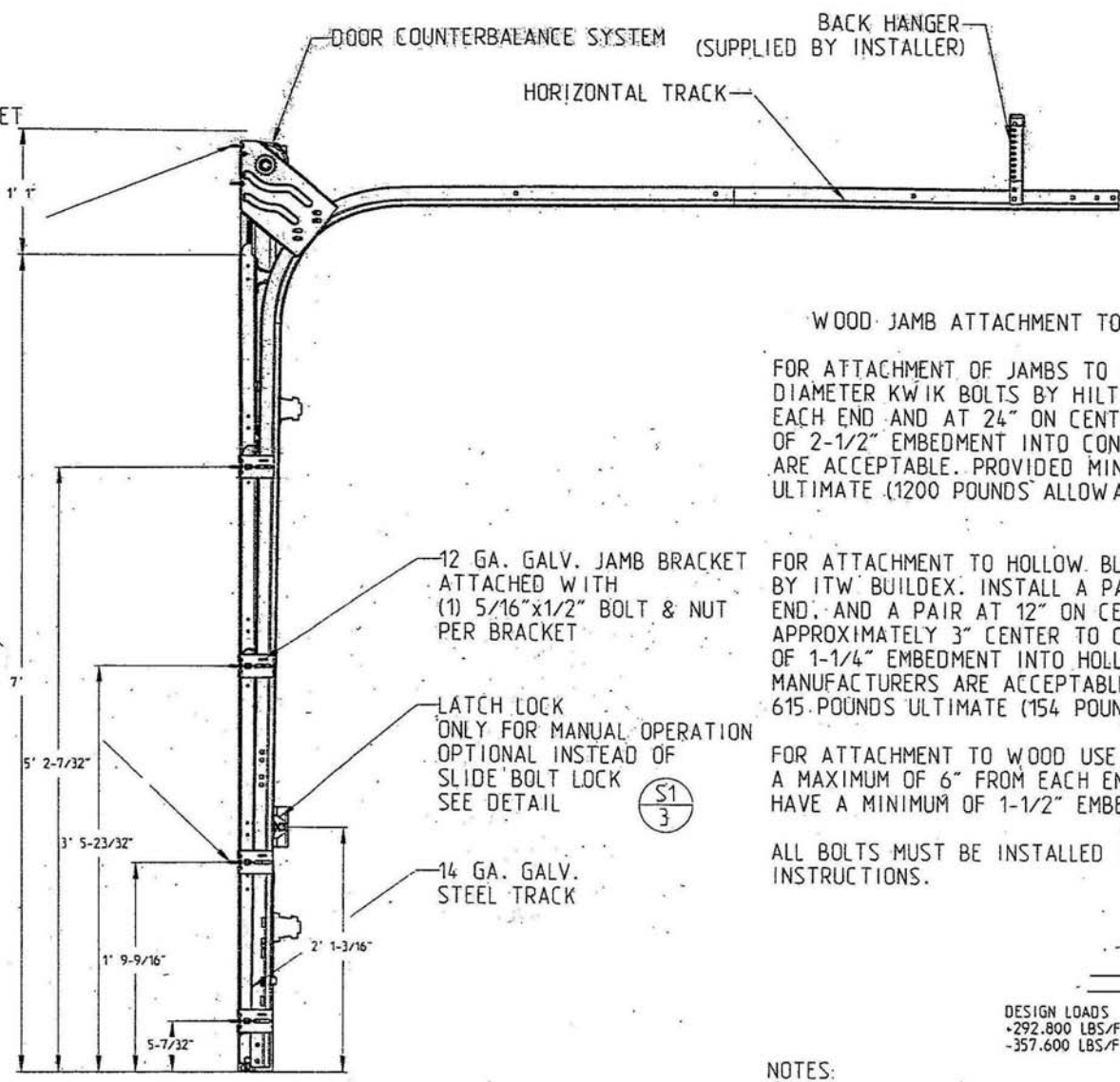
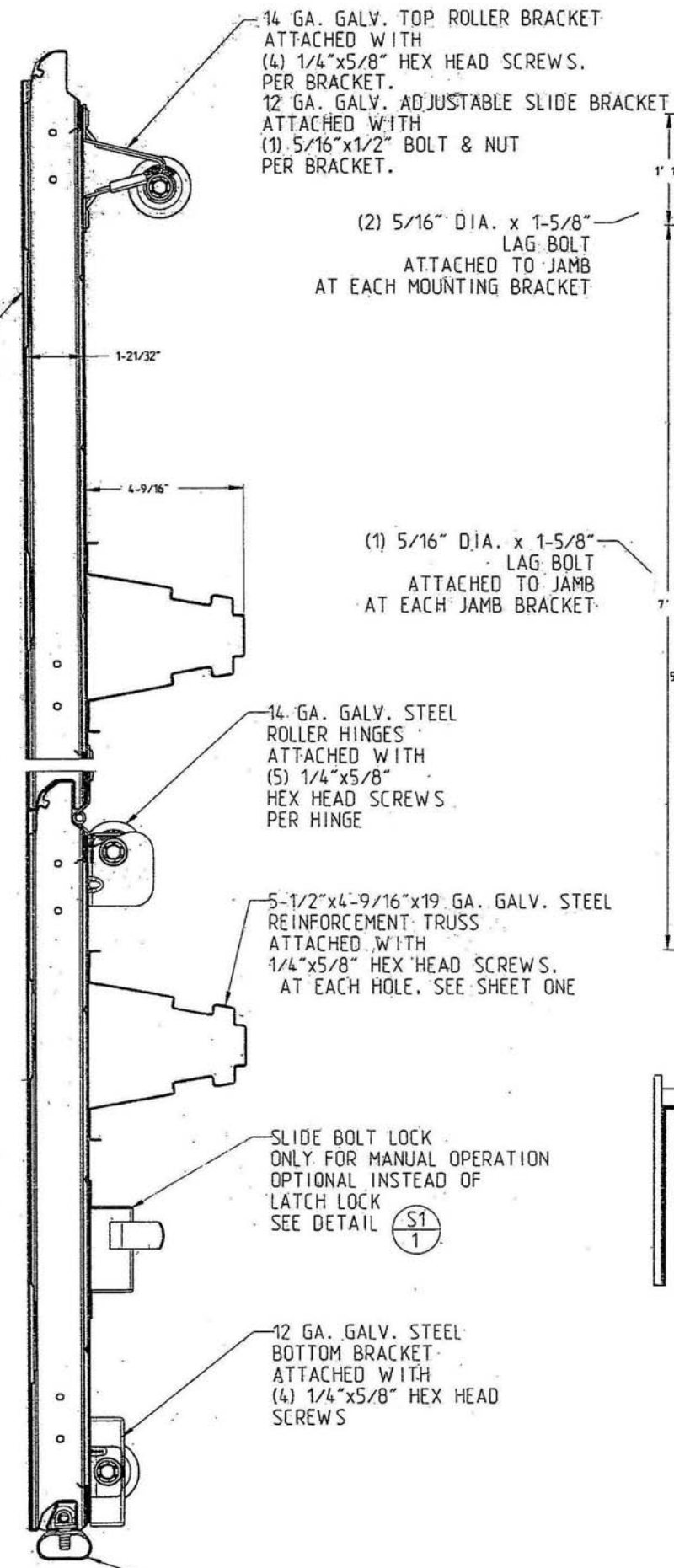
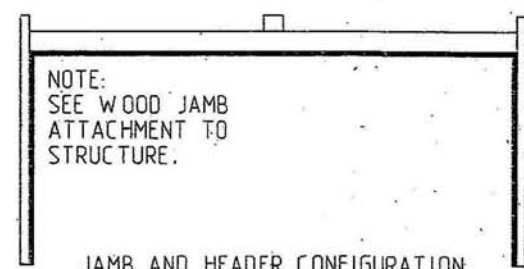


				<b>HORMANN INC.</b>	
				23 EXCELLENCE WAY, VONDRE, TENNESSEE 37065	
				DOUBLE SKINNED DOOR 36.6 PSF DOOR WIDTH 16' HURRICANE	
SIZE	DRAWN BY	BOTHE	DATE	NOV 21 2005	DRAWING NUMBER
A2	CHECKED BY	FROBOSE	DATE	DEC 09 2005	Z3053465
DESIGN DRP ADD.	MAR 11 2005	Bothe			
REV	DESCRIPTION OF REVISIONS	DATE	BY		
					SHEET 2 OF 4

26 GA. MIN. EXTERIOR SKIN WITH G-10 GALV. POLYESTER TOP COAT (MIN. 0.000984")



TRACK CONFIGURATION FOR 4 SECTIONS  
 TRACK CONFIGURATION  
 SCALE 1"=1'



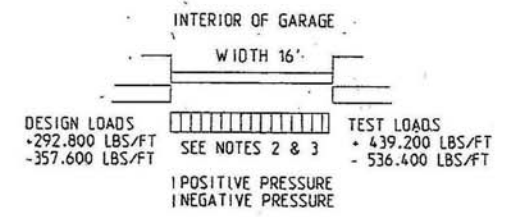
WOOD JAMB ATTACHMENT TO STRUCTURE

FOR ATTACHMENT OF JAMBS TO CAST-IN PLACE CONCRETE, USE 3/8" DIAMETER KWIK BOLTS BY HILTI. INSTALL BOLTS A MAXIMUM OF 6" FROM EACH END AND AT 24" ON CENTER. ANCHORS MUST HAVE A MINIMUM OF 2-1/2" EMBEDMENT INTO CONCRETE. ANCHORS BY OTHER MANUFACTURERS ARE ACCEPTABLE. PROVIDED MINIMUM PULLOUT CAPACITY IS 4500 POUNDS ULTIMATE (1200 POUNDS ALLOWABLE) IN f'c=2000 PSI CONCRETE.

FOR ATTACHMENT TO HOLLOW BLOCK, USE 1/4" DIAMETER TAPCON ANCHORS BY ITW BUILDDEX. INSTALL A PAIR OF ANCHORS A MAXIMUM OF 6" FROM EACH END, AND A PAIR AT 12" ON CENTER. THE PAIR OF ANCHORS SHOULD BE APPROXIMATELY 3" CENTER TO CENTER. ANCHORS MUST HAVE A MINIMUM OF 1-1/4" EMBEDMENT INTO HOLLOW BLOCK. ANCHORS BY OTHER MANUFACTURERS ARE ACCEPTABLE. PROVIDED MINIMUM PULLOUT CAPACITY IS 615 POUNDS ULTIMATE (154 POUNDS ALLOWABLE).

FOR ATTACHMENT TO WOOD USE 5/16" DIAMETER LAG BOLTS. INSTALL BOLTS A MAXIMUM OF 6" FROM EACH END, AND AT 12" ON CENTER. ANCHORS MUST HAVE A MINIMUM OF 1-1/2" EMBEDMENT INTO WOOD STRUCTURE.

ALL BOLTS MUST BE INSTALLED IN ACCORDANCE WITH MANUFACTURER'S INSTRUCTIONS.

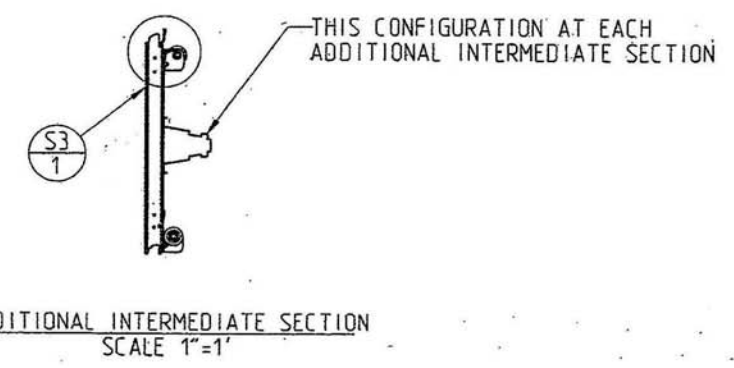
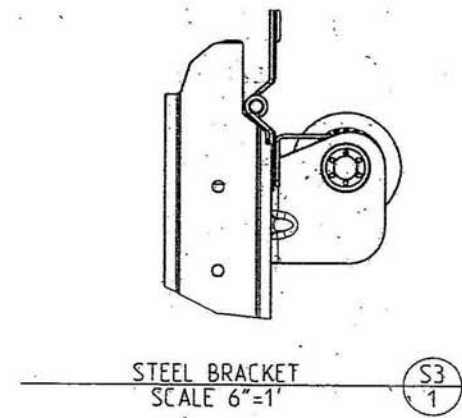
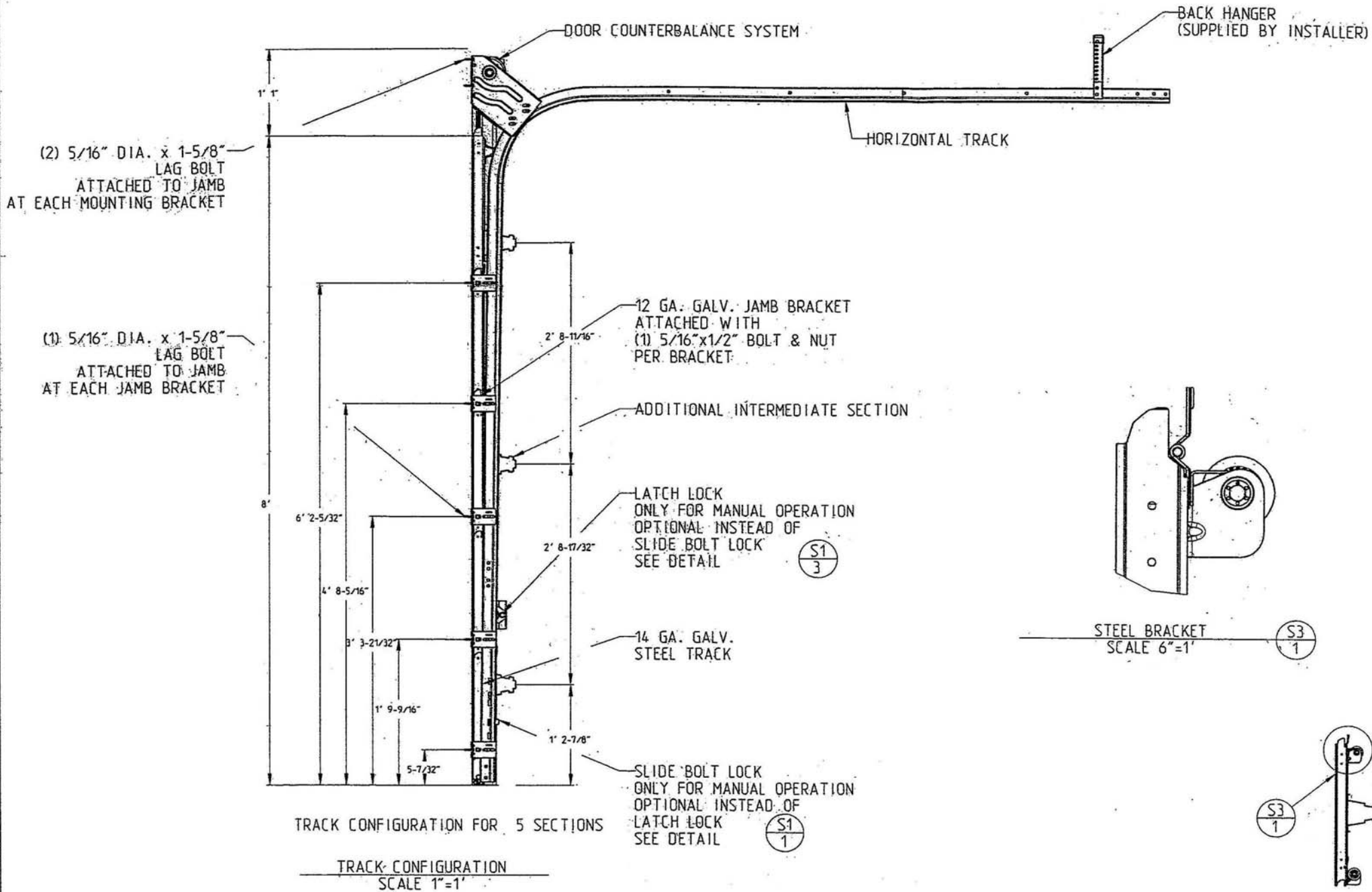



NOTES:

1. ALL THE LOAD FROM THE DOOR IS TRANSFERRED TO THE VERTICAL TRACK. FROM THE TRACK THE LOAD IS TRANSFERRED TO THE VERTICAL JAMBS AND MOUNTING BRACKET. THE HORIZONTAL JAMB OR HEADER RECEIVES NO PORTION OF THE LOAD TRANSFERRED FROM THE DOOR.
2. EACH VERTICAL JAMB RECEIVES MAXIMUM DESIGN LOAD OF: +292.800 LBS/FT & -357.600 LBS/FT
3. EACH VERTICAL JAMB RECEIVES MAXIMUM TEST LOAD OF: +439.200 LBS/FT & -536.400 LBS/FT
4. ALL FASTENERS USED TO SECURE JAMBS MUST BE COUNTERSUNK TO PROVIDE A FLUSH MOUNTING SURFACE.
5. SUPPORTING STRUCTURAL ELEMENTS SHALL BE DESIGNED BY A REGISTERED PROFESSIONAL ENGINEER FOR WIND LOADS INDICATED ON THIS DRAWING IN ADDITION TO OTHER LOADINGS.

SECTION B-B  
 SCALE 4"=1'

		23 EXCELLENCE WAY, VONDRE, TENNESSEE 37865	
		DOUBLE SKINNED DOOR 36.6 PSF DOOR WIDTH 16' HURRICANE	
SIZE	A2	DRAWN BY	BOthe
DATE	MAR 11 2005	DATE	NOV 21 2005
CHECKED BY	FROBose	DATE	DEC 09 2005
DESIGN DRP ADD.			
DESCRIPTION OF REVISIONS		DATE	
		BY	
			DRAWING NUMBER Z3053465
			SHEET 3 OF 4



				 <b>HORMANN INC.</b>	
				<small>HORMANN 23 EXCELLENCE WAY, VONDRE, TENNESSEE 37885</small>	
				<b>DOUBLE SKINNED DOOR 36.6 PSF</b>	
				<b>DOOR WIDTH 16"</b>	
				<b>HURRICANE</b>	
SIZE	DRAWN BY	DATE	BY	DATE	DRAWING NUMBER
a	DESIGN DRP ADD.	MAR 11 2005	Bothe	A2	CHECKED BY FROBöse DATE DEC 09 2005
REV	DESCRIPTION OF REVISIONS	DATE	BY		
					Z3053465
					SHEET 4 OF 4